



Municipal & Highway Truck Lighting Solutions

Designed and Manufactured in the USA



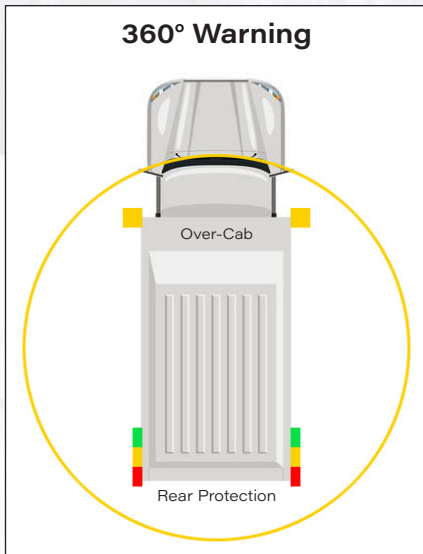
Municipal & Highway Truck Lighting Solutions

Why Consider a Vehicle Lighting System?

Vehicles working on state routes, highways or public roads are required to announce their presence by a flashing warning light which meets or exceeds the performance spelled out by the society of automotive engineers (SAE J845 & J595, Optical Warning Devices for Authorized Emergency, Maintenance and Service Vehicles). Class 1 warning lights are required to meet and exceed 8100 Candela at the light head center or "brightest point". The standard is typically specified for emergency vehicles or other vehicles that may need to demand right of way. These vehicles are moving at speed to warn others of an emergency situation or for vehicles operating on highly trafficked roads. Class 2 warning lights are geared for utility trucks that could be used either on or off-road but need to provide a significant level of movement notification. These lights are 25% as intense as the Class 1 type.

NOSLO Industries lighting systems approach has modernized and simplified installation of high-quality warning lights and provides all the necessary components to install and wire the system specific to your vehicle. **NOSLO systems exceed the standard and bring modern features to the product!**

Defining the most vulnerable areas of the vehicle where driver visibility is restricted and where traffic approaches at roadway speeds.



Choose Rear Warning Package:

1. **Housing Material:** Aluminum for aluminum vehicles, Stainless Steel for stainless steel or steel bodies
 2. **Light Combo:** Single or double light stack and with rear view camera option
 3. **Light Functions:** Single, double or triple color interleaved
 4. **Identify Colors:** All available
- Cable Length:** 30' for basic single axle trucks, longer lengths available

Choose Front Warning Package:

1. **Light Type:** Single, Triple, Quad, Dual 60 Degree Wedge, and 90 Degree Light Housings or Beacon
2. **Identify Colors:** All available
3. **Cable Length:** 60' for basic single axle trucks. Wiring runs down the dump body and back up the frame to the cab, longer lengths available

Rear Lighting



Over-Cab Lighting



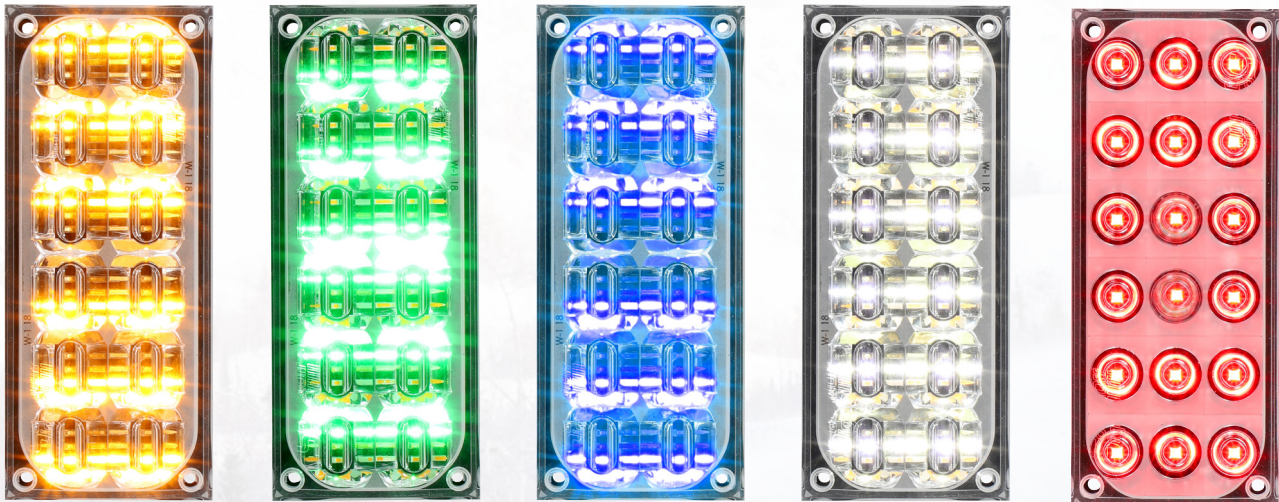
Warning Lights

NOSLO products are designed around SoundOff Signal[®]'s most advanced silicone designs.

Why Silicone?

The optical purity of silicone is second to none using all the available lumens collected and directed as a warning light. These silicone lights produce and conserve heat on the surface of the light inhibiting snow or ice buildup for customers operating in those environments. SoundOff Signal commercialized the use of silicone in warning light technology a decade ago.

"SoundOff Signal is an Approved Automotive Tier 1 Industry Supplier"



Design Attributes

- Modern silicone 7" x 3" warning lights provides full edge to edge lighting distribution for maximum performance
- Available in single, dual or tricolors with full distribution for 100% lighting output
- Simple wiring, control and ease of installation means no special tools, connectors or computer programming is necessary

NOSLO Industries will work hand in hand to design & customize a lighting system solution for your application. Having decades of experience in lighting and vehicle safety, we're confident we'll address any of your specialized application needs!

Rear Lighting Systems

All systems sold in pairs. Single housings come standard with Amber warning and double housings comes standard with Amber warning, Brake/Tail/Turn, Back up lighting, and optional Camera. Optional HD Side Light come standard in Amber only for single and double housing. Secondary Green and Blue warning available. All necessary cable harnessing cut to a 30' length, connectors, stud type junction block for distribution, grommets, hardware, and a stainless steel or aluminum housing of choice.



Single Housing w/HD Side Light



Double Housing



Double Housing w/HD Side Light and Camera

System Models

Rear Housings, Sold in Pairs:	SS	ALUM
Single Housing	RHS-001	ARHS-001
Single Housing with Green or Blue	RHS-002*	ARHS-002*
Single Housing with HD Side Light	RHS-003	ARHS-003
Single Housing with HD Side Light Green or Blue	RHS-004*	ARHS-004*
Double Housing	RHS-005	ARHS-005
Double Housing with Green or Blue	RHS-006*	ARHS-006*
Double Housing with HD Side Light	RHS-007	ARHS-007
Double Housing with HD Side Light Green or Blue	RHS-008*	ARHS-008*
Double Housing with HD Side Light and Camera	RHS-009	ARHS-009
Double Housing with HD Side Light and Camera Green or Blue	RHS-010*	ARHS-010*

Replace * with (G) Green or (B) Blue

Over-Cab Lighting Systems

Over-Cab Lighting Systems sold in pairs. Available in a variety of configurations from Beacons to Single, Triple, Quad, Dual 60 Degree Wedge, and 90 Degree Light Housings.

System comes complete with Amber Warning, Secondary Green and Blue warning available. 60' cable harnessing, connectors, grommets, and hardware supplied.

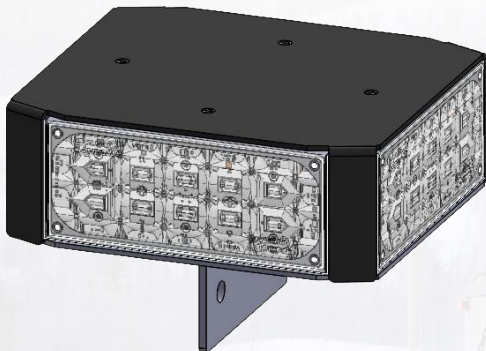
NOSLO Industries first, 360 degree perimeter/scene lighting over-ride feature!



Dual Light Wedge Housing



Triple Light Housing



Quad Light Housing



Dual 90 Degree Light Housing



Single Light Housing



High Dome Beacon
(Low Dome also Available)

Over-Cab Lighting Systems

System Models

Over-Cab Housing, Sold in Pairs:	SS	ALUM
Dual 60 Degree Light Wedge Housing	N/A	OCH-001
Dual 60 Degree Light Wedge Housing with Green or Blue	N/A	OCH-002*
Triple Light Housing	N/A	OCH-003
Triple Light Housing with Green or Blue	N/A	OCH-004*
Quad Light Housing	N/A	OCQH-001
Quad Light Housing with Green or Blue	N/A	OCQH-002*
High Dome Beacon and Mounting Bracket	N/A	OCH-005
High Dome Beacon with Green or Blue and Mounting Bracket	N/A	OCH-006*
Low Dome Beacon and Mounting Bracket	N/A	OCH-007
Low Dome Beacon with Green or Blue and Mounting Bracket	N/A	OCH-008*
90 Degree Light Housing	OCH-009	AOCH-009
90 Degree Light Housing with Green or Blue	OCH-009*	AOCH-009*
Single Housing	RHS-001	ARHS-001
Single Housing with Green or Blue Warning	RHS-002*	ARHS-002*

Replace * with (G) Green or (B) Blue

Surface Mount Lighting "Upgrade your Oval Lighting System Easily!"

Single and Double surface mount housings come standard with Amber warning. Stainless steel housings. For aluminum, contact factory. Secondary Green and Blue warning available. 60' cable harnessing, connectors, grommets, and hardware supplied. Designed with retrofit in mind, upgrade a low cost system with the latest technology.



Surface Mount Housing, Sold in Pairs:	
Single Housing	SMH-001
Single Housing with Green or Blue	SMH-002*
Double Housing	SMH-003
Double Housing with Green or Blue	SMH-004*

Replace * with (G) Green or (B) Blue

Compact Over-Cab & Rear Lighting Systems

Features

- Sold in pairs
- Designed for small and medium duty trucks
- Stainless steel housing
- Less than 2" tall/wide
- Horizontal or vertical mounting for rear housings
- 60 Degree Wedge over-cab housings
- Amber warning standard
- Optional integrated sanding light



COCH-001



CRSV-002



CRSV-003



CRSH-001

System Models

Over-Cab & Rear Housing:	
Dual Over-Cab Light 60 Degree Wedge Housing	COCH-001
Double Rear Housing Vertical with Optional Sanding Light	CRSV-002
Double Rear Housing Vertical	CRSV-003
Double Rear Housing Horizontal with Optional Sanding Light	CRSH-001
Double Rear Housing Horizontal	CRSH-002



AKA72 Traffic Assault Arrow

- Powder coated black aluminum arrow housing (Custom colors available upon request)
- Left, right, split arrow, and warning functions
- Multi color used in different sequencing
- Ability to synchronize with other arrow boards set in a traffic sequence
- Optional wireless remote control
- MUTCD: Larger than CLASS B SIZE, Exceeds CLASS C performance
- 72" Long by 36" High



Models:	
Traffic Advisor Amber#	AKA72-001
Traffic Advisor Multi Color Amber/Green#	AKA72-002
Traffic Advisor Amber with Wireless Remote Controller	AKA72-003
Traffic Advisor Multi Color Amber/Green with Wireless Remote Controller	AKA72-004

#Sync capable, Low current control wiring, Customer supplied switches



Wing Plow Light

- Designed for wing plow tip to provide rearward facing warning light when plow is deployed
- Heavy-duty aluminum construction in natural finish
- Amber warning standard
- Single, dual or multi color capable
- Silicone lens/optic technology
- Serviceable Housing
- 43 Degree Angled Light Offset
- Fully protected Housing
- Footprint 3" x 4.75"
- Also available as an white illumination light for us in a variety of applications



Models:	
Wing Plow Warning	WPW-001
Wing Plow Warning with Green or Blue	WPW-002*
Illumination Wing Plow for Multi-Position Body/Chassis Applications, White	WPW-003

Replace * with (G) Green or (B) Blue

LED Spot & Flood Lights

Features

- Deliver super bright output with low amp draw
- Weatherproof design
- Adjustable mounting brackets make these lights ideal for multiple vehicle applications
- Available in 700, 900 and 1800 Lumens



SL-700



SL-900



SL-1800

ClearView Series Racks

- 2" heavy-duty aluminum tubular design with wiring channel protection, security, weather protection, long-life serviceability and ensures a neat professional appearance.
- ClearView allows for an unobstructed view through the rear window, while providing a solid mounting platform.
- Black powder coating protects against corrosion, scratches and dings.
- Differences in bed geometry are adapted by the size of the centerpiece.
- Base model starts as a three-piece system, weighing less than 40lbs.



DPW Series Racks

- Aluminum tubular design with wiring channels protect and cover wiring for security, weather protection, long-life serviceability and neat, professional appearance.
- Designed for mounting emergency and auxiliary lighting without wire clutter or holes in your truck body.
- Toolbox friendly mounting feet
- Pre-drilled access holes accommodate a wide range of emergency lighting products from full size to mini lightbars.
- Black powder coating protects against corrosion, scratches and dings.
- Fleet managers will appreciate the functionality, ease of up-grade and/or transfer from vehicle to vehicle.

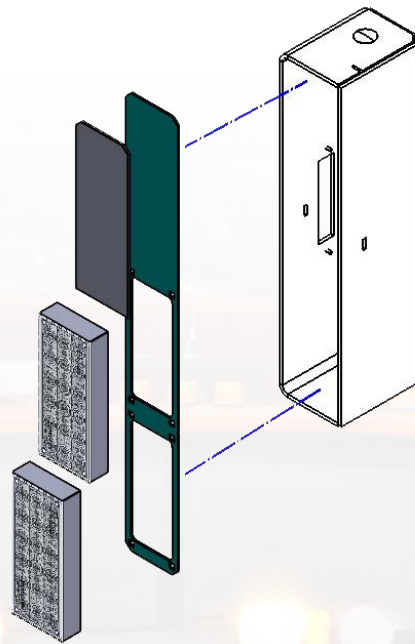


ClearView and DPW Racks fit Chevrolet/GMC, Ford, and Ram Pickups
Contact NOSLO Industries for More Information

RetroFIT Outdated Lighting “Upgrade to NOSLO Pro-Solutions”

Poor performance, complex wiring and unnecessary computer programming of a centralized, outdated flasher unit is a good reason to upgrade to a NOSLO Pro-Solution while still using your existing housings. We can provide adapters to allow our multi-function, interleaved, silicone lighting to nicely update a refurbished dump truck. Brackets are made dependent on your current configuration, utilizing existing housings.

Contact NOSLO Industries for Details and Pricing



NOSLO[®]

INDUSTRIES

10 Woodbury Road
Deep River, CT 06417
860-322-4562
sales@noslo-industries.com
www.noslo-industries.com